

KOBELCO

SK120 SK120LC

MARK 

HYDRAULIC EXCAVATORS



- Bucket Capacity: 0.30—0.60m³ DIN CECE heaped
- Engine Power: 85 PS DIN NET at 2,150 rpm
- Operating Weight: 11,500 kg—SK120/11,700 kg—SK120LC

Technical Data

SK120 SK120LC MARK III

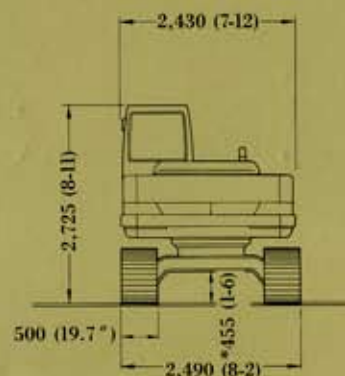
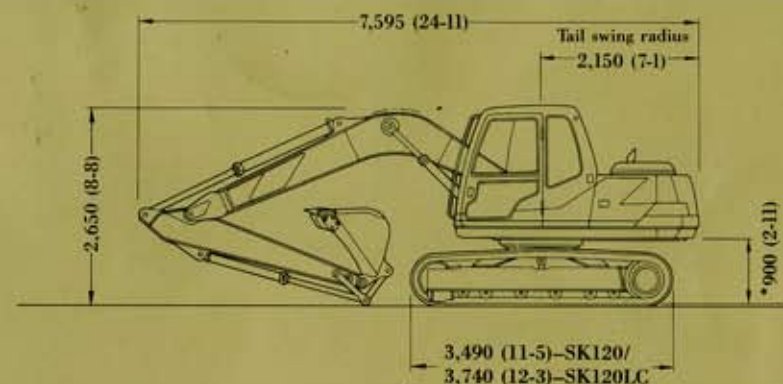
Specifications

| Performance | |
|-------------------------|--|
| Bucket capacity | m ³ (cu yd) |
| CECE (SAE/PSCA) heaped | 0.30-0.60 (0.22-0.92) |
| Travel speed | km/h (mph) |
| Swing speed | rpm |
| Gradeability | ° (%) |
| Drawbar pulling force | kg (lb) |
| Weight | |
| Operating weight | kg (lb) |
| Ground pressure | kg/cm ² (psi) |
| Engine | |
| Model | ISUZU 4BD1-T |
| Type | Direct injection, water-cooled, 4-cylinder, 4-cycle diesel with turbocharger |
| Power output | |
| PS DIN NET at rpm | 85/2,150 |
| Displacement | cc (cu in) |
| Fuel tank capacity | liters (US gal) |
| Hydraulic system | |
| Pumps | 2 variable displacement piston pumps |
| Control | ESS, KPSS |
| Max. discharge flow | liters/min (US gal/min) |
| Max. discharge pressure | kg/cm ² (psi) |
| Bucket and arm | 300 (4,270) |
| Propel circuit | 350 (4,980) |
| Swing circuit | 250 (3,560) |
| Pilot control | 50 (710) |
| Swing motor | Axial piston motor |
| Travel motor | Twin, axial piston, two-step motors |
| Control valves | 5-spool+1-spool |
| Pilot control | Boom, arm, bucket, swing and propel |
| Hydraulic capacity | liters (US gal) |

* asterisk shows figures of SK120LC.

| Digging Force | | Unit: kg (lb) | | | |
|----------------------|-----------|---------------|----------|----------|-----------|
| Arm Length | | 2.1 | 2.5 | 3.0 | 2.5+1.0 |
| | m (ft-in) | (6-11) | (8-2) | (9-10) | (8-2+3-3) |
| Bucket Digging Force | | 7,700 | 7,700 | 7,700 | 7,700 |
| | | (16,980) | (16,980) | (16,980) | (16,980) |
| Arm Crowding Force | | 6,800 | 6,100 | 5,400 | 4,800 |
| | | (14,990) | (13,450) | (17,720) | (10,580) |

Dimensions



Note: Values assume the use of 2.5 m arm, standard 0.45 m³ bucket, and 500 mm shoes unless otherwise indicated. Figures of * asterisk apply to values without shoe lug.

Working Ranges

| Range | Arm | 2.1 (6-11) | 2.5 (8-2) | 3.0 (9-10) | 2.5+1.0 (8-2+3-3) |
|---|------------------------|--------------|--------------|--------------|-------------------|
| a — Max. digging reach | | 7.90 (25-11) | 8.25 (27-1) | 8.74 (28-8) | 9.19 (30-2) |
| b — Max. digging reach at ground level | | 7.75 (25-5) | 8.12 (26-8) | 8.61 (28-3) | 9.07 (29-9) |
| c — Max. digging depth* | | 5.17 (17-0) | 5.57 (18-3) | 6.07 (19-11) | 6.56 (21-6) |
| c' — Max. depth of bucket hinge pin | | 3.92 (12-10) | 4.32 (14-2) | 4.82 (15-10) | 5.32 (17-5) |
| d — Max. digging height* | | 8.29 (27-2) | 8.50 (27-11) | 8.84 (29-0) | 9.08 (29-9) |
| d' — Max. height of bucket hinge pin | | 7.09 (23-3) | 7.30 (23-11) | 7.64 (25-1) | 7.88 (25-10) |
| e — Max. dumping clearance | | 5.85 (19-2) | 6.06 (19-11) | 6.40 (21-0) | 6.64 (21-9) |
| f — Min. dumping clearance | | 2.41 (7-11) | 2.00 (6-17) | 1.53 (5-0) | 1.00 (3-3) |
| g — Max. vertical wall digging depth | | 4.48 (14-8) | 4.87 (16-0) | 5.33 (17-6) | 5.83 (19-2) |
| h — Min. swing radius | | 2.39 (7-10) | 2.39 (7-10) | 2.53 (8-4) | 2.39 (7-10) |
| i — Horizontal digging stroke at ground level | | 3.66 (12-0) | 4.36 (14-4) | 4.92 (16-2) | 5.88 (19-3) |
| j — Digging depth for 2.4 m (8') flat bottom | | 4.92 (16-2) | 5.35 (17-7) | 5.89 (19-4) | 6.40 (21-0) |
| Bucket capacity | | | | | |
| CECE (SAE/PCSA) heaped | m ³ (cu yd) | 0.5 (0.76) | 0.45 (0.68) | 0.35 (0.52) | 0.3 (0.44) |

NOTE: Due to our policy of continual product improvement, all designs and specifications are subject to change without advance notice.

KOBE STEEL, LTD.

CONSTRUCTION MACHINERY DIVISION

27-8, Jingumae 6-chome, Shibuya-ku, TOKYO, 150 Japan/Tel: (03) 3797-7021 Fax: (03) 3797-7072

Bulletin No. SK120-SK120LC MARKIII-EC-2P-101
910405TF Printed in Japan